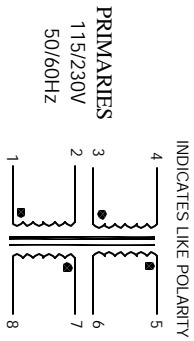


The information contained in this drawing is the sole property of CWS-Specialist. Any reproduction in part or whole without written permission is prohibited.



5 WHERE SHOWN, USING A PERMANENT MARKING METHOD
MARK PART NUMBER AND REVISION

4 CONTACT CWS FOR MORE INFORMATION
BUT NOT CERTIFIED OR TESTED BY THESE AGENCIES
DESIGNED TO MEET UL, CSA, TUV STANDARDS,
CONCENTRIC CONSTRUCTION

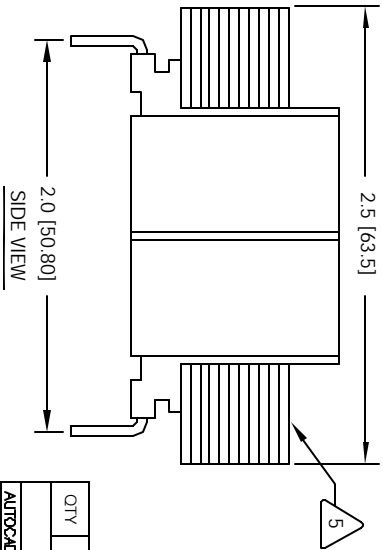
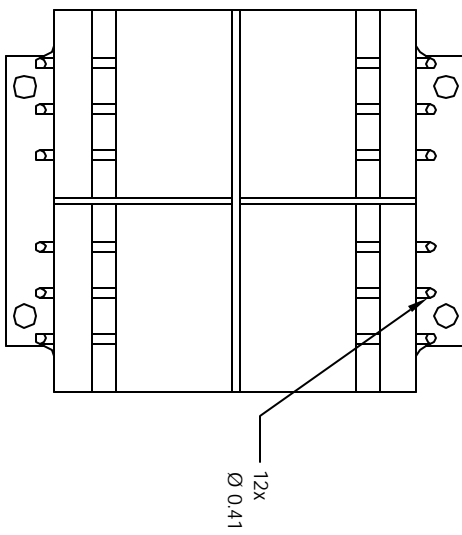
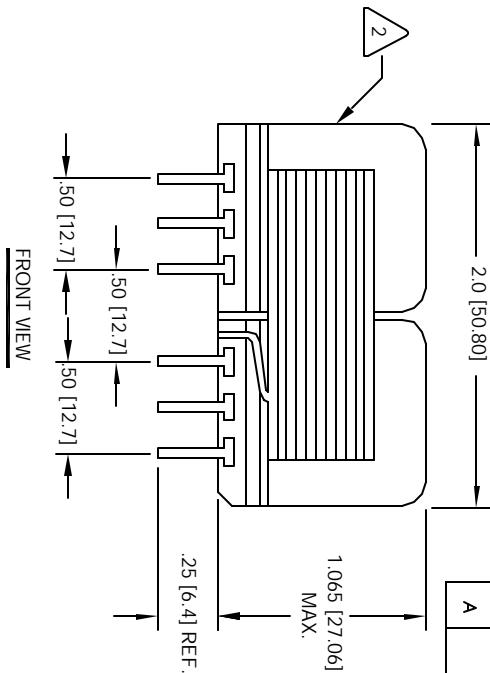
3 VOLT-AMPERES RATING = 12 VA
SPECIFICATIONS @ 25°C
WIRE: UL RECOGNIZED 130°C RATED MAGNET WIRE
CWS BYTE-MARK OR OTHER APPROVED PART
CORE: 50 Hz / 60 Hz LAMINATION

2 BOBBIN RATING CLASS B (130°C) REQUIRED
MATERIAL: UL RECOGNIZED 94V-0 FOR FLAMMABILITY

NOTES: UNLESS OTHERWISE SPECIFIED,
READ NOTES FROM BOTTOM TO TOP

EP FORM0005 REV 3 10/01

REV		ECN		REVISION HISTORY			
REV	DESCRIPTION	BR	DATE	CHK	DATE		
A	PRODUCTION RELEASE	TKK	4/16/08	JLU	4/16/08		



QTY	CODE	MFG. P/N	DESCRIPTION	ITEM NO.
			PARTS LIST	
			CWS Coil Winding Specialist	
			1510 E. Edinger Ave. Unit B, Santa Ana, CA 92705	
			Power Transformer	
			EPL Series, 12VA, 1.065" High	
			SIZE DIMS. NO.	
			B	
			EPL-12-24	
			SCALE	
			Z=1	
			SHEET 1 OF 1	

CAD-FILE: